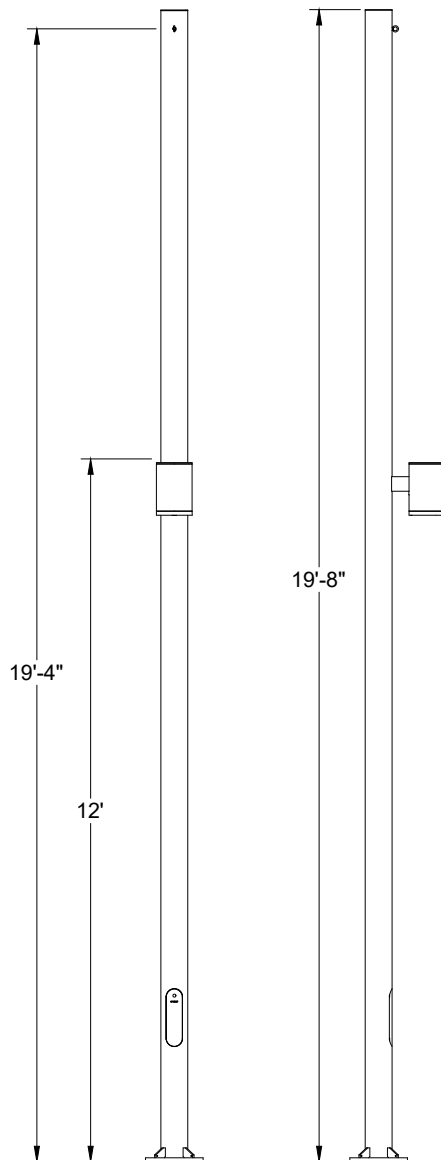


INSTALLATION AND SERVICE MANUAL

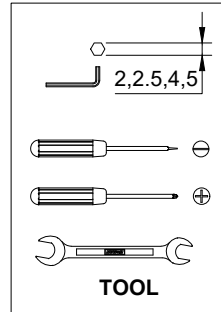
For installation of TANGO 36,37 POST TOP .
Model. UTA-20011-TS1-US2108018

Product drawing (dimensions)

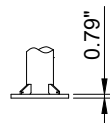
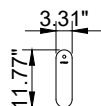
SUITABLE FOR WET LOCATIONS



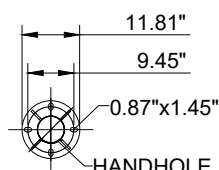
UTA-20011-TS1-US2108018



BOTTOM VIEW

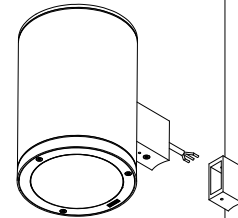


SERVICE DOOR

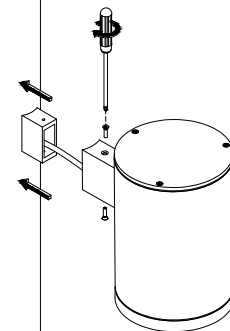


HANDHOLE
MOUNTING DETAIL

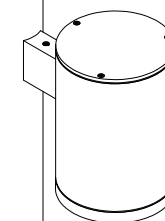
1



2



3



- LIGMAN standard products are supplied with the control gear 24Vdc.
The control gear for other voltages and frequencies is available upon request, please consult us for more details.
 - LIGMAN luminaires are designed to conform IEC 60598 2-18 standard.
- Technical amendments and modifications techniques reserved.

Ligman Lighting USA

7144 NE Progress Court, Hillsboro
Oregon, 97124, USA
Tel : 503 645 0500 | Fax : 503 645 8100

